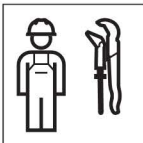


# Installation Manual

**Montageanleitung**  
**Instructions de montage**  
**Istruzioni per il montaggio**

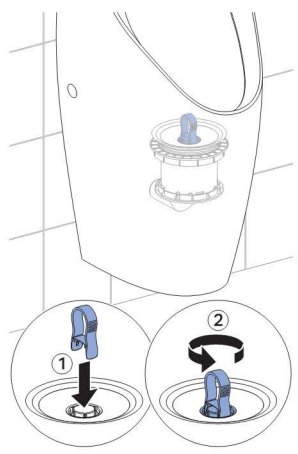
**KNOW  
HOW**  
INSTALLED



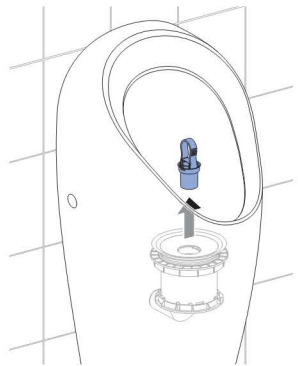


1

1

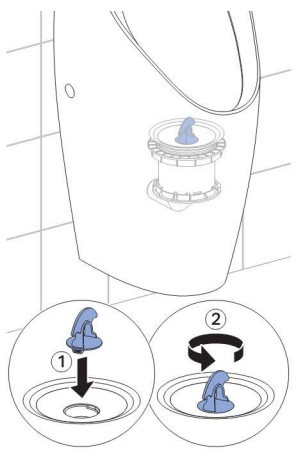


2

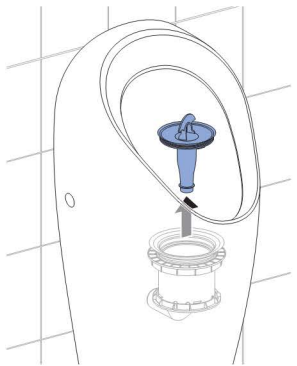


2

1



2



Geberit International AG  
Schachenstrasse 77, CH-8645 Jona  
T +41 55 221 63 00 | F +41 55 221 6316  
documentation@geberit.com  
→ www.geberit.com